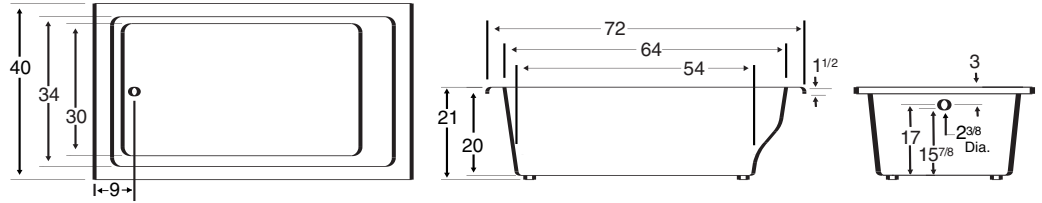


Always check the website for the most updated specifications: [www.zumacollection.com](http://www.zumacollection.com)



Tub pictured with optional waste and overflow.

All bathtub dimensions are ± 1/2".

### CODES AND COMPLIANCE

Products meet or exceed the following standards:

- Underwriters Laboratories (UL)
- Underwriters Laboratories - Canada (cUL)
- ANSI Z124.1 • ANSI A112-19.7
- ANSI A112.19.8

### ELECTRICAL REQUIREMENTS

We recommend one 20 amp ground fault circuit interrupter (GFCI) for each power supply provided with the bathtub.

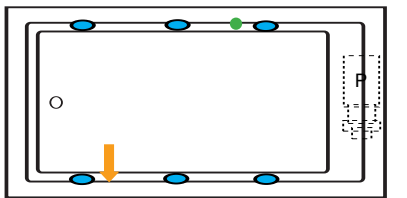
### DIMENSIONS

72" x 40" x 21" deep

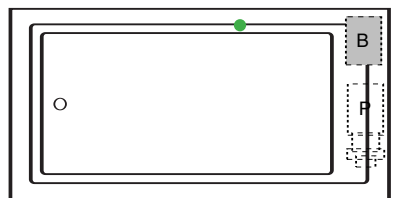
Whirlpool Operating Gallons = 72

Gallons to Overflow = 98

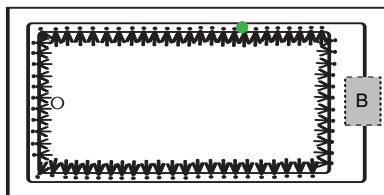
### Whirlpool



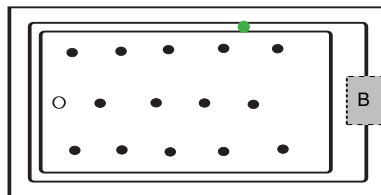
### Combination (pump and blower location only)



### Airbath System II



### Airbath System III



### OPTIONAL ACCESSORIES

- Apron
- Chromotherapy Light
- Grab Bars
- Inline Heater
- Pillow
  - Angle
  - Full Back
  - Head & Shoulder Support
  - Head Support
  - Open Back
- Suction Cup
- Rotary Jets
- Tile Flange Kit
- Waste & Overflow
- Wood Decking
- Wood Shelf

Undermount Yes  No

**LEGEND:** [PUMP SYMBOL] PUMP [BLOWER SYMBOL] BLOWER [JET SYMBOL] JET [ON/OFF CONTROL SYMBOL] ON/OFF CONTROL

[DUAL SUCTION SYMBOL] DUAL SUCTION [ACCESS PANEL SYMBOL] ACCESS PANEL (MINIMUM 16" x 20")

### INSTALLATION TIPS

- Install product according to our Owners Manual and local codes.
- All units with an Airbath III may be 1 1/2 - 2 1/2" higher than stated.
- All whirlpool or Airbath™ units require an access panel.
- Hot water supply should be 65-75% of tub capacity or greater. Always consult your local plumber for recommendations as installations will vary.
- When ordering for undermount installation, always advise us to assure there are no issues with deck mounted controls.
- Cut-out dimension: 70" x 38"